

# Railway Maintenance Depot, London, UK



Fibrelite Supply Lightweight Cable Trench Covers to One of UK's Largest Railway Maintenance Depots



*Railway Maintenance Depots*

Fibrelite's bespoke lightweight composite trench covers have recently been installed over a service trench at the primary railway maintenance depot for the Docklands Light Railway. These were installed to give quick and easy access to the service trench.

## The Problem

Fibrelite had two major issues to deal with when installing and manufacturing the retrofit solution. Firstly, the concrete rebate was dimensionally inconsistent throughout, causing an undulating surface. Secondly, high and low voltage cables running through the trench also had to come out of the trench to the switch boards in various positions along the trench.

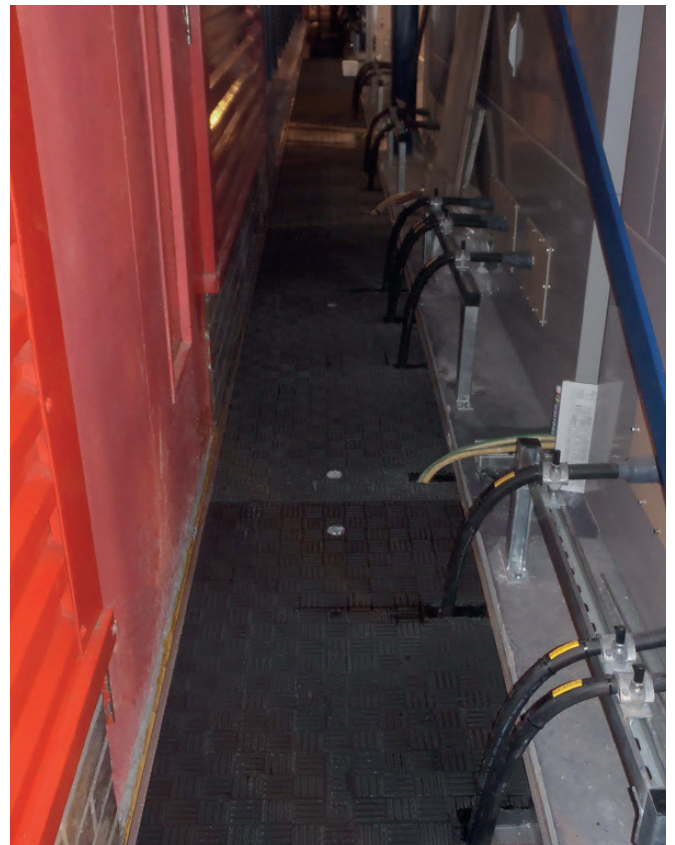


*High and low voltage cables leaving trench to switchboard at regular intervals*

## The Solution

Fibrelite supplied and installed an encapsulating frame that directly fitted into the existing rebate. Fibrelite's experienced site team was able to provide a solution to correct the inconsistent trench using Epoxy Resin to level the surface to ensure the frame and trench panels fitted flush.

Fibrelite also manually cut and re sealed the appropriate trench panels allowing the electricity cables to run out of the trench to reach the correct switch boards.



*Trench panels cut and re-sealed on site allowing cables to run through*

## Results

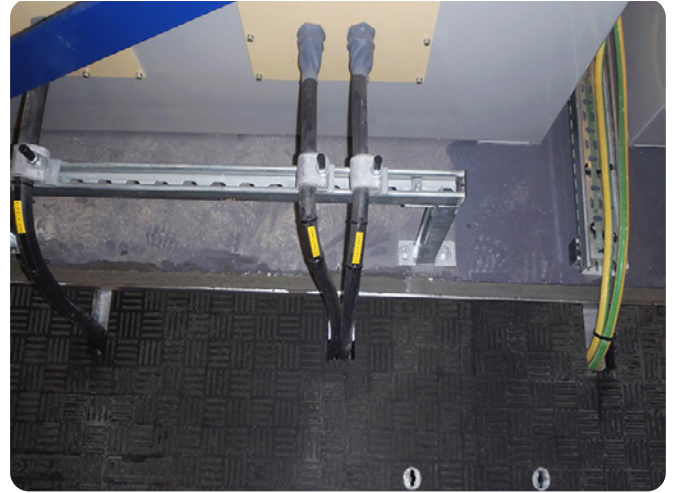
This retrofit project presented a number of challenging problems which needed to be overcome. Fibrelite designed and manufactured large bespoke panels the longest of which was 1.6 m long, reducing the total number of panels required to cover the trench.

Fibrelite's dedicated team of site engineers assisted with the installation of the covers, as they were required to be cut and re-sealed to accommodate service cables.

This project was completed in short amount of time, making the installation process both quick and efficient, which is just one of the many benefits of choosing Fibrelite.



*Expansive trench requiring coverage*



*Custom made covers fit the trench and cabling entry points perfectly*

**For more information on Fibrelite's product range please contact us:**

**UK Office:**

Tel: + 44 (0) 1756 799 773

Email: [enquiries@fibrelite.com](mailto:enquiries@fibrelite.com)

**US Office:**

Tel: + 1 919 209 2404

Email: [enquiries@fibrelite.com](mailto:enquiries@fibrelite.com)

**Malaysia Office (Asia Pacific):**

Tel: + 44 (0) 1756 799 773

Email: [enquiries@fibrelite.com](mailto:enquiries@fibrelite.com)